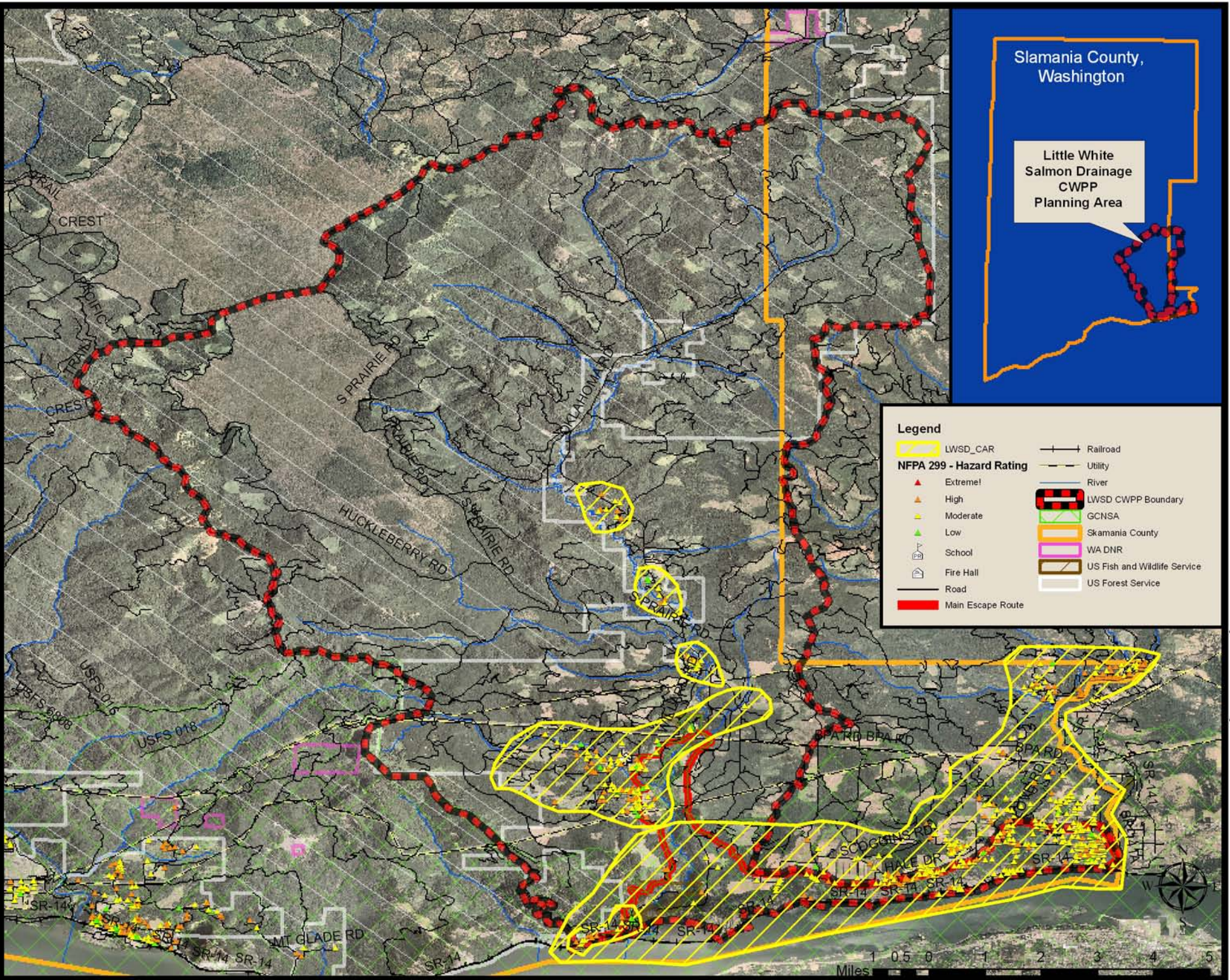


# Appendix H-5 Little White Salmon Drainage (LWSD) Communities At Risk (CAR)



Slamania County,  
Washington

Little White  
Salmon Drainage  
CWPP  
Planning Area

**Legend**

- LWSD\_CAR
- NFPA 299 - Hazard Rating
- Extreme!
- High
- Moderate
- Low
- School
- Fire Hall
- Road
- Main Escape Route
- Railroad
- Utility
- River
- LWSD CWPP Boundary
- GCNSA
- Skamania County
- WA DNR
- US Fish and Wildlife Service
- US Forest Service

Miles 1 0.5 0 1 2 3 4 5